



Invest in ME

The County District of Mettmann as a Business Location



Table of Contents

| | |
|----|--|
| 3 | Preface |
| 4 | Location |
| 8 | Economy |
| 12 | Outstanding Competence |
| 14 | Development Areas for Industry, Commerce and Private Housing |
| 16 | Networks |
| 18 | Education |
| 22 | Cultural Life |
| 24 | Leisure and Sports |
| 26 | Sheer Development |
| 28 | Fact and Figures |
| 30 | The Team |

Preface

Invest in ME

...there is an abundance of reasons to do so because the County District of Mettmann as a business location has a lot to offer. We have a unique diversified and broad mix of small and medium-sized industries as well as global players represented here. Also research and development are an established factor in our local economy. No less than four polytechnics – also called Universities of Applied Sciences (UAS) – play an important role in our county district. In our “Schlüsselregion” - “key area” we find a first-class high-tech cluster of industries specializing in the manufacture of keys, locks, further security technology and metal fittings.

In conjunction with the Mayors of the ten towns in our district I would like to invite you to acquaint yourself with the County District of Mettmann as a business location, a region which has been on the map since the age of Neanderthal man.

On the following pages managers in commerce and industry, who have already relocated their companies to our district, will tell you of their reasons for choosing to **Invest in ME**.

Yours



Thomas Hendele
Landrat des Kreises Mettmann
(Administration head of the County District of Mettmann)

A man with short, light-colored hair, smiling, is seated on a large, patterned cushion. He is wearing a dark blue blazer over a dark green shirt and white trousers. He holds a small white model airplane in his hands. Behind him are several mannequins dressed in various clothing items, including a black dress, a blue top, and a blue dress with a long scarf. The background shows a large window with a view of a green landscape.

» ...because I reach my
destination in
ten minutes! «

ESPRIT Europe GmbH | Heinz Krogner | Chairman & Group CEO Esprit Holdings Ltd.

» ESPRIT is an international lifestyle business. «



Location

We find ourselves in a fortunate situation

The County District of Mettmann, with its 10 towns, is situated in the centre of Europe in the heart of Germany's most populated federal state, North Rhine-Westphalia.

The north of the district used to be a part of the historical Duchy of Berg. Here, in the town of Wülfrath, the River Düssel has its source. This river meanders through our district before joining the River Rhine at Düsseldorf, our state capital. – Literally translated Düsseldorf means “the village at the River Düssel”.

To the south of the district the Rhine is the natural border which separates the town of Monheim from the City of Cologne and the County District of Neuss.

It goes without saying that the County District of Mettmann, “the green centre amidst urban centres”, has excellent transport connections. No matter whether travelling by road, rail, river or air, it is readily accessible. This is an important argument for all those who have already chosen to **Invest in ME**.

The County District of Mettmann has a striking location. The major cities of Düsseldorf, Cologne and Wuppertal, as well as the Ruhr conurbation are our direct neighbours. Eight different motorways and a dense, well-maintained road network make us easily accessible by road. Frequent local train services, buses and tramways provide a reliable system of public transport. Hence, the national and international Inter-City train services are within easy reach of all the towns in the district. For national and international air travel there are three airports in our vicinity. The nearest of which, Düsseldorf International, Germany's third-largest airport, is only a stone's throw away.



The County District of Mettmann has around 500,000 inhabitants within an area of 407 km². We would like to invite you to experience the wonderful synergy of charming residential areas and attractive industrial and commercial parks. Because the district is highly populated a well qualified workforce is readily available. People from 145 nations have found a new home here, and we see the cultural and linguistic diversity as an opportunity providing new possibilities and opening doors to local business enterprises. It is also noteworthy that consumer spending in the County District of Mettmann has been the highest in North Rhine-Westphalia for many years.

Each of the ten towns in the district is justifiably proud of its uniqueness. We strongly recommend that you explore the County District of Mettmann. You will be impressed by its diversity. There are charming medieval town centres and modern shopping precincts offering excellent shopping facilities. There is the choice between the bustle of cities and more tranquil communities.

The County District of Mettmann – A Survey

| | | |
|--|-----------|--|
| Area in km ² | 407 | Inter-City train stations: Düsseldorf, Essen, Cologne, Leverkusen, Solingen and Wuppertal. |
| Inhabitants (31.12.2008) | 499,193 | |
| Consumer spending per capita (2008; Germany = 100) | 118.8 | |
| Trade tax - rate of assessment (2009) | 360 - 440 | |
| Rates/Property tax assessment (2009) | 366 - 420 | |
| Rate of unemployment (30.06.2009) | 7.5% | |
| Traffic connections | | |
| Airport Düsseldorf International | 9 km | Motorways A 3 Utrecht/Arnhem (NL) - Passau A 44 Belgium - Kassel A 46 Heinsberg - Arnsberg A 52 Roermond (NL) - Marl A 524 Junction Ratingen - Breitscheid-Duisburg A 59 Dinslaken - Bonn A 535 Junction Sonnborn (A 46) - Velbert-Nord A 542 Monheim am Rhein - Langenfeld |
| Airport Essen-Mülheim | 11 km | |
| Airport Cologne-Bonn | 33 km | |
| Airport Frankfurt/Main | 190 km | |
| Railway Stations in the district | 20 | |
| Bus lines | 104 | |



The County District of Mettmann



**» ... because 4.6 million
inhabitants in the
surroundings provide an
enormous potential. «**



Bayer CropScience AG | Alois Brockmann-Lange | Site Manager | Monheim / Rhine

» Bayer CropScience is worldwide one of the leading companies in the fields of herbicides, pest control, seeds and agricultural biotechnology. «

Economy

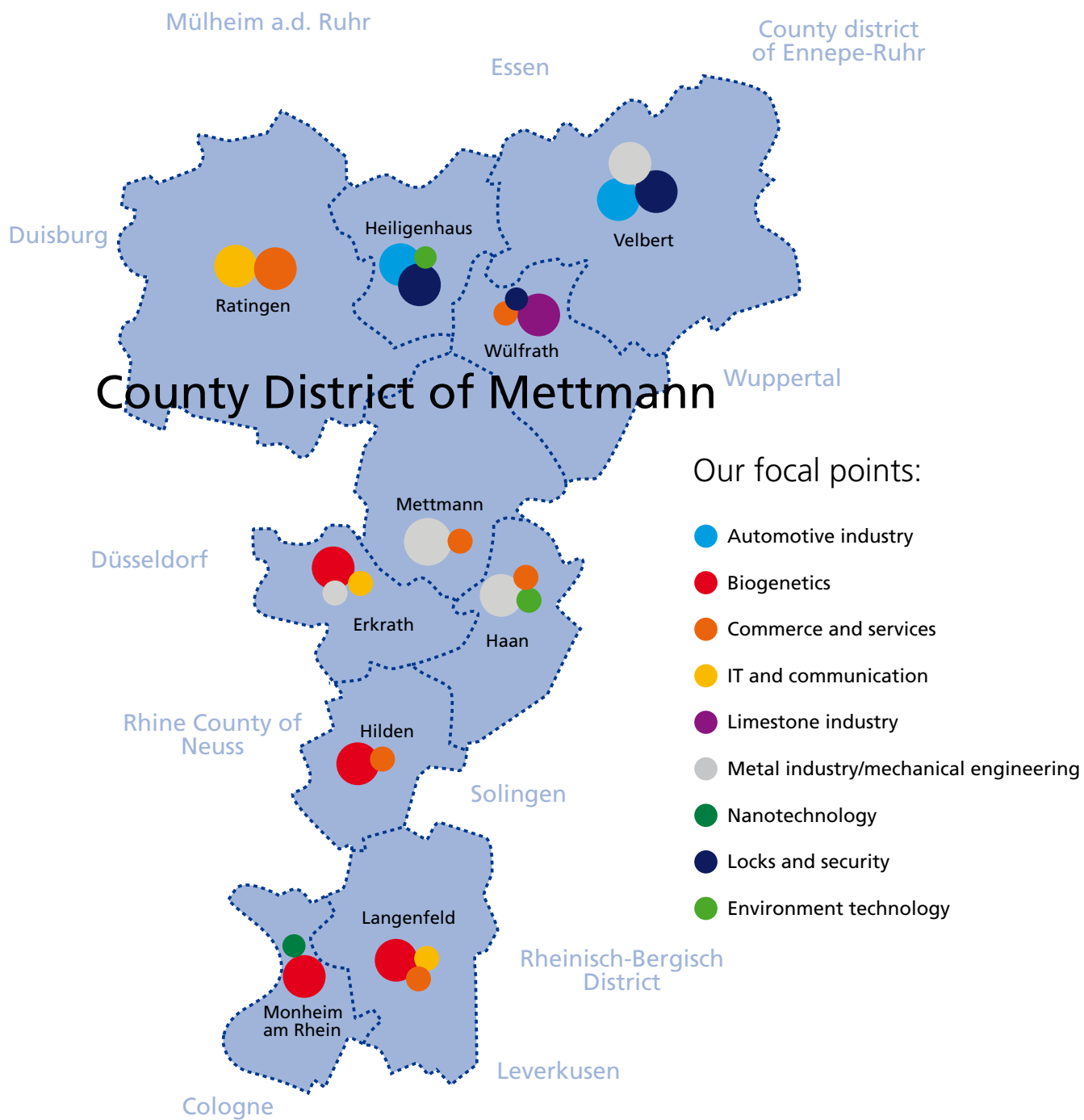
Become a part of a vibrant community

The economy of the County District of Mettmann is predominantly characterized by small and medium-sized enterprises. Companies demonstrate their loyalty to this location by offering the local workforce stable and attractive environments. In short: we highly appreciate these companies!

However, we also take pride in the well-known international larger companies, whose operations span the globe, and whose presence in the area indicates the advantages that the County District of Mettmann offers.

The right mix is essential for a good cocktail. The same principle works for an economic location. We believe in a balanced mixture of industries and, what is more, we are achieving this. Currently, more people commute into the district than out of it. Moreover, we offer sufficient space for highly specialised enterprises. This is already evident in the diversity that has been achieved. The areas designated for commercial and industrial use allow for diverse and imaginative planning initiatives, permitting local industries to actively contribute to the development of the area.







In the northern part of the County District of Mettmann the towns of Velbert and Heiligenhaus are renowned for the numerous companies specializing in the manufacture of locks, keys and other security technology, as well as the production of metal fittings. These two towns, along with Mettmann and Wülfrath, also produce component parts for the automotive industry. The towns of Erkrath, Haan, Mettmann, Wülfrath and Heiligenhaus provide excellent locations for further production and processing industries, often with metal being a major factor.

Service industries and commerce are a particular strength of the town of Ratingen. Many companies of international standing have made their bases here. Besides Ratingen, the towns of Erkrath and Wülfrath are important locations in the field of information technology and telecommunications. Also Haan, Hilden, Langenfeld and Mettmann are noted for the concentration of service industries and commerce.

A large number of companies in the field of biotechnology and genetic engineering, medical technology and pharmaceuticals have established bases in the southern part of the County District of Mettmann, primarily in the towns of Hilden, Langenfeld and Monheim, but also in Erkrath. Additionally, environmental technology features prominently in this district, with notable companies operating in this field appreciating the location advantages of the town of Haan.

An important feature which is common to all these towns is the abundance of highly qualified crafts, trades and artisans who are the backbone of our local economy. This is almost unequalled in other regions.

The starter centre North Rhine-Westphalia located in our County Hall offers extensive and comprehensive support to founders of new businesses. For example the town of Hilden has provided smaller building plots especially suited to starter businesses. Heiligenhaus and Velbert have both won awards for being particularly supportive to young companies.





» ...because there is a wide
scope of opportunities
for our enterprise. «

QIAGEN | Peer M. Schatz | Chief Executive Officer

» QIAGEN is the leading provider of sample and assay technologies and products for preanalytical sample preparation and molecular diagnostics solutions. «



Outstanding Competence

Always in good company


A number of enterprises primarily involved in biotechnology and genetic engineering have established their bases in the south of the County District of Mettmann. One of their prime concerns is research on innovative technologies. Here, a net of co-operation has developed in which companies benefit from their mutual competence. Consequently, the BioRiver e. V. network has been founded, with the intention of enhancing and deepening this exchange of experience and know-how. Hence, one of the leading enterprises in this field chose Hilden for their base of operations. The business operation is expanding constantly and currently has a workforce of 1,000.

Information technology in all its facets is strongly represented in the County District of Mettmann. For these companies, as well as for local biotechnical and genetic engineering firms, the short distances to their partners and the universities in the vicinity are of high importance.

The towns of Heiligenhaus and Velbert are the "Schlüsselregion" - "key area" in our district. A highly advanced and competitive manufacture of locks, keys and other security technology has developed here over the years, which is unique in Europe. Besides this core activity – everything relevant for security, including keys – also products of aesthetic value are manufactured here, e.g. the star emblem of the Mercedes vehicles or decorative pendants for key rings.

No matter whether your business activities are within one of the wider fields of competence or in one that is not so widely represented: we would like to support you in your efforts to be linked up with partners or provide contacts to other branches of industry, universities or institutions. You want to grow? Let us assist you!



A woman with short brown hair, smiling, is seated in a vibrant red armchair. She is wearing a light blue short-sleeved button-down shirt and black trousers. Her hands are clasped in her lap, and she wears a watch on her left wrist and a ring on her right hand. The background is a vast cellar filled with numerous green plastic crates, each containing several bottles of Haaner Felsenquelle. The crates are stacked high, creating a textured wall of bottles. In the foreground, to the right of the chair, sits a bottle of Haaner Felsenquelle and a tall, slender glass. The floor is a smooth, light-colored surface.

» ...because here I can live and
work in an ideal environment. «

Haaner Felsenquelle | Gabriele Römer | Managing Director

» The old-established Haaner Felsenquelle, is a state-approved medicinal spring. The company bottles several thousand litres of drinks daily which provide refreshment for people in the local region and as far as the Netherlands. «

Development Areas for Industry,
Commerce and Private Housing

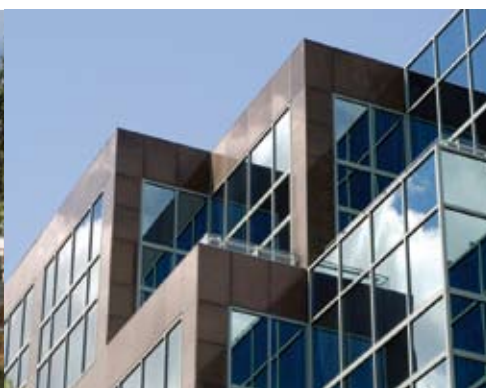
Some may live central - but we are at the hub of it all

A total of almost 2,953,000 m² of quality development areas is available in the County District of Mettmann. Most of the land is located in good or even excellent positions. An area of around 653,800 m² is ready for immediate planning. Please consult the table on pp. 28-29 for further detailed information.

Parts of these commercial spaces are in new development areas. However, there are also opportunities to establish enterprises in existing commercial and industrial parks. Besides the continuing development of "Rheinpark" in Monheim the town of Haan is in the process of developing an up-and-coming commercial park called "Champagne hoch 2".

For obvious reasons everybody appreciates quality housing. Our housing situation must be compatible with the life we lead. The County District of Mettmann caters for all tastes. So it is our particular concern to find the right balance of a reliable network of public transport, close proximity to working places and an entitlement to quiet residential areas. Also unusual projects are given a chance in our district, e.g. the "Hundertwassersiedlung" in Wülfrath. This is a housing estate, named and designed after the famous Austrian painter Friedensreich Hundertwasser, to which a nursery school belongs which is renowned for its outstanding architecture.

The Offices for Economic Incentives (Wirtschaftsförderung) of the ten towns in the County District of Mettmann will be pleased to inform you about individual local opportunities and planning possibilities. Please refer to pp. 30-31 for further information.



» ...because we encounter
competent partners here! «



Jul. Niederdrenk GmbH & Co. KG | Julia and Bernd Niederdrenk | Managing Directors

» Jul. Niederdrenk GmbH & Co. KG is a 4th generation family enterprise. Using the latest technology we manufacture locking systems and accessories. «

Networks

10 individual towns, yet one entity - the County District of Mettmann


We are a stable unity; communication among our members has a long tradition and is one of our strong points. We are fair and open with each other. In all aspects we rely on equal partnership.

The Heiligenhaus and Velbert manufacturers of locking systems and other security technology are networked in an exemplary way. The proverbial "look over one's own fence" is put into action through cooperation with companies in the vicinity and with schools and universities.

The network "Frauen macht Wirtschaft" (Women in Economy) is an excellent example of a well-functioning co-operation within our county district. This network does not only incorporate businesswomen from the County District of Mettmann, but also from the three cities of Wuppertal, Solingen and Remscheid. Its main objective is to enhance the climate for business start-ups by women. Any company seeking to join a network will be able to find competent partners for all topics. The operating of networks is facilitated by the proximity to a number of universities and colleges.

A further outstanding example of a successful communal project is the joint presentation at EXPO REAL in Munich. This presentation is organised by the County District of Mettmann in conjunction with the ten towns of the district and various other partners, and has been sponsored for years by a number of local companies. We highly appreciate having such a reliable and loyal pool of partners in our district, who represent their business location with pride and conviction. We want to express our deep gratitude to everybody supporting our presentation at EXPO REAL.





» ...because I can find
well-trained young
people here. «

Georg Fischer | Bodo Müller | Head of Human Resources Management;
Christian Rieger | Trainee Mechatronics Fitter

» Georg Fischer is a leading industrial enterprise with three main fields of operation: GF Automotive,
GF Piping Systems and GF AgieCharmilles. «



Education

School – Career Orientation – Career

The County District of Mettmann takes pride in its reputation of being extraordinarily focused on education. This is because we have initiated ground-breaking, attractive and successful educational opportunities which assist and support our children's career orientation.

At a very early stage we became aware that our regional offers of traineeships and apprenticeships would have to match the career choices of our school leavers. This was our motive to set up the "Career Orientation Network" – "BerufsOrientierungsNetzwerk" (BON) – as a communal initiative in conjunction with the Düsseldorf Chamber of Commerce and Industry. Thus, BON serves as a platform for information and communication for all involved in the hub of school, career orientation and career. **Our aim is to create effective career counselling within our schools at an early stage in close co-operation with our regional businesses and industries.**

Furthermore, we have the well-established network "Schools & Economy" (KSW), in which companies and secondary schools co-operate, thus generating synergic effects to their mutual benefit by creating durable "learning partnerships". In this scheme companies send qualified staff into their partner school where they teach classes in relevant subjects. Vice versa, school classes visit their partners to experience a live working environment. This is an integral part of the school curriculum which provides the students with practical aspects of business and industry. Apart from the novel educational experience, many students come to realize that the subject matters taught at school actually benefit them in their later working life. Many of these learning partnerships have existed very successfully for a number of years. Seventy-five per cent of all secondary schools in the county district co-operate in this way with one or more companies and appreciate the motivation provoked in the students by expert practitioners. Around one hundred companies participate in the KSW network and the feedback we get from them is overwhelmingly positive, the more so, as the avid students make up a pool of motivated future apprentices and trainees. The effect of the co-operation shows that the effort is paying off: there are winners on both sides!





The impression that life moves at an ever faster pace can be measured by the speed of new technological developments. Twenty years ago only experts knew about biotechnology. Today even pupils in junior school perform experiments in that field. They are able to do this in two excellent laboratories which were established through the initiative of local companies. Here our “junior scientists” can research under expert instruction and are challenged to pursue their quest for scientific and technological solutions. NEAnderLab, for instance, is one of the 25 zdi*-centres (*Zukunft durch Innovation – into the future through innovation) in North Rhine-Westphalia funded by the Ministry of Innovation, Science, Research and Technology. It was implemented in just one year through a public-private-partnership in conjunction with the County District of Mettmann. Numerous big, medium-sized and small firms in our county assisted with and supported the implementation. The list of sponsors and supporters reads like a “Who is Who” of well-known companies in our region.

We are truly proud of their enormous commitment on behalf of the advancement of the future workforce.

NEAnderLab and the vocational college in Hilden, being in the immediate vicinity of each other, complement each other excellently because the latter offers a training course for bio-technical assistants. This course was introduced in order to satisfy the requirements of our local companies, whose needs we take very seriously. This is another case where constructive dialogue between partners has been very conducive. Please approach us – we would love to act also on your behalf!



At various locations in the county district we offer our highly motivated school leavers outstanding opportunities for academic or polytechnic studies. Bochum University of Applied Sciences, for instance, has recently opened a new Campus in Velbert/Heiligenhaus, where young engineering students are taught in courses of dual studies. (The dual studies model combines theory and practice to maximum effect.) Close co-operation between university and economy safeguards a constant hands-on contact with the latest developments and topics of research for the future university graduates. After a course of only four years these young bachelors of engineering (B.Eng.) are available for the employment market and, due to their comprehensive training and qualification, are sought-after recruits by prospective employers.

Moreover, also experienced professionals can obtain university degrees in the County District of Mettmann, e.g. Bachelor / Master of Business Administration (BBA/MBA) or even Doctor of Business Administration (DBA) in the field of health care and social studies. **In conclusion it can be said that there are many opportunities for training and further training in our county district. That is why we are confident that you will find the human resources here that are most suitable for you.**

The standard of education in the County District of Mettmann is well above the average of the state of North Rhine-Westphalia. This is due to many factors: excellent nursery schools and schools, manifold opportunities for vocational training or courses of dual studies within our region and certainly also the proximity to more than a dozen universities and universities of applied sciences. Children, adolescents and adults alike have easy access to first-rate institutions of education, further education and higher qualification.



A man with short brown hair, wearing a black suit jacket over a white shirt, is sitting on a wooden pallet. He is looking directly at the camera with a slight smile. His hands are clasped together in his lap. He is wearing a black watch on his left wrist. The background is filled with numerous wooden crates stacked high, each containing rows of small, colorful paint tins in various shades including orange, pink, yellow, green, blue, and purple. The setting appears to be a paint factory or a warehouse.

» ...because here I have
easy access to arts and
cultural activities. «

H. Schmincke GmbH & Co. KG | Nils Knappe | Managing Director

» For over 125 years H. Schmincke & Co have been producing artists' paints which enjoy worldwide reputation because of their outstanding quality. «



Cultural Life

Our cultural county is the Neanderland

Diversity is our hallmark. Our towns, as different as they are from each other - our people, so unique and yet so diverse in their backgrounds: they all create a wonderful blend and have put their brand on the cultural life in the County District of Mettmann.

Several museums offer visitors new and instructive information. Come and join us on a ramble through a random selection of museums: In Ratingen you will find an unique industrial monument: The LVR-Industrial Museum Cromford displays exhibits from the beginning of the cotton spinning industry in Germany in the late 18th century. Moreover, visitors are given an insight into the life and working conditions of mill workers towards the end of the 18th century. The planetarium of the observatory in Erkrath-Hochdahl is one of the most advanced ones in Germany. Here you can observe constellations and go on fascinating galactic tours. In Velbert you find the „Deutsches Schloss- und Beschlägemuseum“, a museum dedicated to the history of keys, locks and fittings. St. Mary's Cathedral in Neviges, an interesting example of modern architecture (1968), is certainly worth a visit, too. Do you fancy travelling back in time? Come to an abandoned limestone quarry in Wülfrath and experience a nature event in an old mining tunnel which is 160 m long and study geological history on the spot. The old town of Haan is known for "Haaner Kirmes". This traditional local historical event has been celebrated with a fair ever since the year 1385. During the 4 days of the fair the town centre, including its main thoroughfare, is closed for all traffic. More than 400,000 visitors witness to the popularity of "Haaner Kirmes".

But all this does by no means exhaust the list of what is on offer in the cultural scene of our County District. You have innumerable events to choose from: Town and village fetes are very popular. Exhibitions, art galleries, museums, theatres, cabarets, musicals, concerts and cinemas; you name it. All our towns have attractive venues where cultural events can be enjoyed. The "Neanderland Biennial Art Festival" is a particular highlight which is held every two years. In 2003 the theme was "Emotional Landscapes". In 2005 you might have visited "Eerie Places" and in 2007 you would have been able to listen to "Sound Areas". In 2009 the curtain opened for "All the World's a Stage!". More than 5,000 spectators enjoyed the wide variety of stage productions. You can already look forward to the Biennial 2011!





**» ...because here I find
a change from the
routine of work! «**

Helbako GmbH | Ralf Burmester | Management

» Helbako is a medium-sized enterprise which has won several awards for excellence. The company manufactures electronic component parts for the automotive industry. «

Leisure and Sports

Are you keen on sports

There is hardly a kind of sport that is not on offer in the County District of Mettmann. A wide range of choice is there for you and your family. There are more than 1,200 sports clubs at your disposal. Moreover, there are seven golf courses where you might improve your handicap. Becoming airborne from one of the three gliding fields will give you a totally different perspective of the County District of Mettmann.

Alternatively, you can hike, cycle or just take a walk through one of the beautiful parks, such as "Marienburg Park" in Monheim/Rhine. At "Bismarckturm" (Bismarck's tower) in Velbert you can find a ropes course where, at a height of five to six metres, you are able to test how daring and adventurous you are.

The County District of Mettmann is a horse riders' paradise. We have an abundance of well-equipped equestrian centres and in Langenfeld there is the state-run School for Riding and Carriage Driving. If your thoroughbred should be a little off-colour you can take it to Bergische Tierklinik, a renowned animal clinic.

Are you a water sports devotee? Why not go for a rowing session on Blauer See (blue lake, approximately two hectares) in Ratingen? Or you might enjoy going to the water sports centre in Langenfeld, where you can improve your water-skiing skills. Just in case you prefer water in its frozen state: Ratingen has a very popular indoor ice-skating rink.



A photograph of a Neanderthal mannequin and a modern man standing together in a museum setting. The Neanderthal mannequin, on the left, is shirtless, has a large beard, and is holding a spear. The modern man, on the right, is wearing a dark suit and a patterned tie, and is smiling. They are standing in front of a large window that looks out onto a green landscape. The floor is covered with large, dark rocks.

» ...because here history and
innovation feel at home! «

Neanderthal Museum | Professor Dr. Gerd-Christian Weniger | Director

» Our house is one of the most successful archaeological museums in Germany. It is its mission to forge an understanding between the sciences and the visiting public. Cutting-edge research and the appreciation of research by young and old go hand in hand here. «



Sheer Development

A sustainable location since time immemorial

For us development is not just another word but a challenge for action

The discovery of his skeleton in a cave in Neanderthal (Neander valley) in 1856 marked the beginning of the rise of Neanderthal man to a truly universal star. Everybody knows him – everybody has an image of him who has played such an important part in the history of mankind. That was sufficient reason to dedicate a museum to him in the vicinity of the place of discovery. It opened in 1996 and has since then won numerous awards and attracts 170,000 visitors annually. The main topics of the exhibition are the perspectives of the development of mankind, the debate about the Today, and the Tomorrow and the questions “Where do we come from?”, “Who are we?” and “Where are we going?”.

If you are expecting a traditional museum you will be surprised. Hands-on experience, active learning and special events, all these await you here. This is the reality of a museum prepared for the future. Individually tailored events for companies deserve a particular mention. They make for a lively exchange within the local economy and create new impulses for all sides.

The museum, the discovery of Neanderthal man, the cultural and historical relevance of the place are significant incentives to learn from the past and to be open to the future.

To encourage the sustainable development of this location is the objective of our county community. In order to achieve our common goal we need to strike new paths, develop a wealth of ideas and have the courage and persuasiveness to tackle new projects. Among these are “Masterplan Neandertal”, aimed at the conservation and development of the unique cultural landscape, the establishment of NEAnderLab, a laboratory for secondary school students, and the University of Applied Sciences at the Campus Velbert/Heiligenhaus with its emphasis on a dual system of engineering studies.



Make use of the opportunity and mould the future together with us! We give you a warm welcome!

Facts and Figures

The ten towns at a glance

| | 1 | Erkrath | 2 | Haan | 3 | Heiligenhaus | 4 | Hilden |
|---|--------------------------------------|---------|---|------|---|--------------|----------------------------------|--------|
| Address | Bahnstraße 2 40699 Erkrath | | Kaiserstraße 85 42781 Haan | | Hauptstraße 157 42579 Heiligenhaus | | Am Rathaus 1 40721 Hilden | |
| Telephone | +49 (0) 211 2407-2008 | | +49 (0) 2129 911-240 | | +49 (0) 2056 13-102 | | +49 (0) 2103 72-110 | |
| Web address | www.erkrath.de | | www.haan.de | | www.heiligenhaus.de | | www.hilden.de | |
| Contact | Susanne Knoblich | | Knut vom Bover | | Peter Parnow | | Norbert Danscheidt | |
| E-Mail | wirtschaftsfoerderung@ erkrath.de | | wirtschaftsfoerderung@ stadt-haan.de | | wirtschaftsfoerderung@ heiligenhaus.de | | norbert.danscheidt@ hilden.de | |
| Area in km² | 26.9 | | 24.2 | | 27.5 | | 26.0 | |
| Inhabitants (2008) | 46,340 | | 29,149 | | 26,963 | | 55,961 | |
| Consumer spending per capita (2008; Germany = 100) | 114.1 | | 119.6 | | 109.0 | | 113.7 | |
| Trade tax- rate of assessment | 400 | | 385 | | 410 | | 400 | |
| Rates/Property tax-rate of assessment | 380 | | 380 | | 380 | | 380 | |
| Total available industrial/ commercial area in m² | 135,000 | | 161,000 | | 322,000 | | 254,000 | |
| Short- term availability | 37,000 | | 11,000 | | 27,800 | | 152,000 | |
| Medium-term availability | 60,000 | | 100,000 | | 94,200 | | 102,000 | |
| Average price for industrial or commercial land per m² | 85.00 - 128.00 € | | 85.00 - 95.00 € | | 75.00 € | | 130.00 - 155.00 € | |
| Trade tax- rate of assessment | 9.00 € | | 5.75 - 8.75 € | | 6.50 - 9.00 € | | 7.00 - 10.00 € | |
| Storage space-average renting price/m2 | 5.00 € | | 3.00 - 4.75 € | | 3.30 - 4.50 € | | 4.00 - 5.50 € | |

| 5 | Langenfeld | 6 | Mettmann | 7 | Monheim am Rhein | 8 | Ratingen | 9 | Velbert | 10 | Wülfrath |
|--|------------|------------------------------------|----------|--|------------------|--|----------|--|---------|--|----------|
| Konrad-Adenauer-Platz 1 40764 Langenfeld/Rhdl. | | Neanderstraße 85 40822 Mettmann | | Rathausplatz 2 40789 Monheim am Rhein | | Minoritenstraße 2-6 40878 Ratingen | | Thomasstraße 1a 42551 Velbert | | Am Rathaus 1 42489 Wülfrath | |
| +49 (0) 2173 794-510, -520 | | +49 (0) 2104 980-126 | | +49 (0) 2173 951-610, -621 | | +49 (0) 2102 550-1070, -1071, -1072 | | +49 (0) 2051 26-2430, -2437 | | +49 (0) 2058 18-285 | |
| www.langenfeld.de | | www.mettmann.de | | www.monheim.de | | www.stadt-ratingen.de | | www.wirtschaftsfoerderung. velbert.de | | www.wuelfrath.de | |
| Ulrich Beul Armin Müller | | Wolfgang Karp | | Thomas Waters Oliver Brügge | | Reiner Heinz, Bettina Löcker, Manuela Naber | | Wilfried Löbbert Frank Schmidt | | Klaus Biederbeck | |
| ulrich.beul@langenfeld.de armin.mueller@langenfeld.de | | wolfgang.karp@ mettmann.de | | wirtschaftsfoerderung@ monheim.de | | reiner.heinz@ ratingen.de | | wirtschaftsfoerderung@ velbert.de | | wirtschaftsfoerderung@ stadt.wuelfrath.de | |
| 41.1 | | 42.5 | | 23.1 | | 88.7 | | 74.9 | | 32.2 | |
| 59,213 | | 39,560 | | 43,308 | | 91,704 | | 85,465 | | 21,530 | |
| 111.9 | | 113.2 | | 103.6 | | 119.8 | | 104.0 | | 105.8 | |
| 360 | | 403 | | 435 | | 400 | | 440 | | 440 | |
| 336 | | 415 | | 415 | | 380 | | 420 | | 420 | |
| 220,000 | | 222,000 | | 510,000 | | 300,000 | | 540,000 | | 289,000 | |
| 45,000 | | | | 140,000 | | 70,000 | | 120,000 | | 51,000 | |
| 155,000 | | | | 60,000 | | 100,000 | | 420,000 | | 69,000 | |
| 100.00 - 125.00 € | | 80.00 - 130.00 € | | 90.00 € | | 130.00 - 250.00 € | | 65.00 - 85.00 € | | 60.00 - 80.00 € | |
| 9.00 € | | 6.00 - 10.00 € | | 8.00 € | | 7.50 - 12.00 € | | 6.50 € | | 8.50 € | |
| 4.50 € | | 3.00 – 5.00 € | | 4.00 € | | 3.50 - 5.00 € | | 3.90 € | | 5.00 € | |

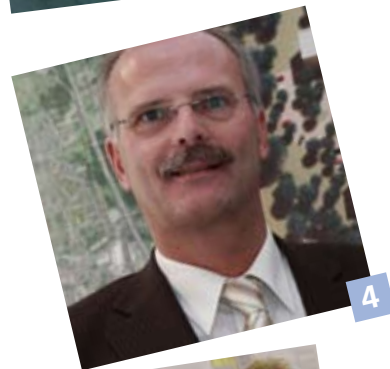
11

Kreis Mettmann

Büro des Landrats
Wirtschaftsförderung
Düsseldorfer Straße 26
40822 Mettmann

Dirk Haase
Telefon: +49 (0) 2104 99-2618
Wirtschaftsfoerderung@kreis-mettmann.de
www.kreis-mettmann.de

29



Our faces
Talk to us!



The Team

Into the Future - Together

The County District of Mettmann is a strong community. We, therefore, are convinced that we can achieve our goals better as a team! So we are in a constant process of improving our services because we communicate regularly with each other and with the enterprises in our district.

If you are planning to live and work in the County District of Mettmann, we will only be too pleased to be of assistance to you. We are certain that we have the industrial or commercial site suitable for your plans.



We are looking forward to you.
Your Business Development in the County District of Mettmann



Contact Partners

County District of Mettmann - Administrative
Head of Business Development
Tel.: +49 (0) 2104 99-2621
Fax: +49 (0) 2104 99-5618

www.kreis-mettmann.de
wirtschaftsfoerderung@kreis-mettmann.de



The County District of Mettmann –
“Invest in ME” is a publication of Kreis Mettmann, Wirtschaftsförderung (Office for Economic Incentives).
No part of this publication may be reproduced without the prior permission of the publishers.

Print run: 9/2009/ 750 · Source: QIAGEN, fotolia, shutterstock, gettyimages, Neanderthal Museum/Euroga 2002+, Günther Lintl, own archives
Release: September 2009 · Print: print-office Preuß · Design and realisation: Advertising Agency gebäude 7, www.gebaeude7.de
Photos: Simone Holzberg · English translation: Peter Arhelger